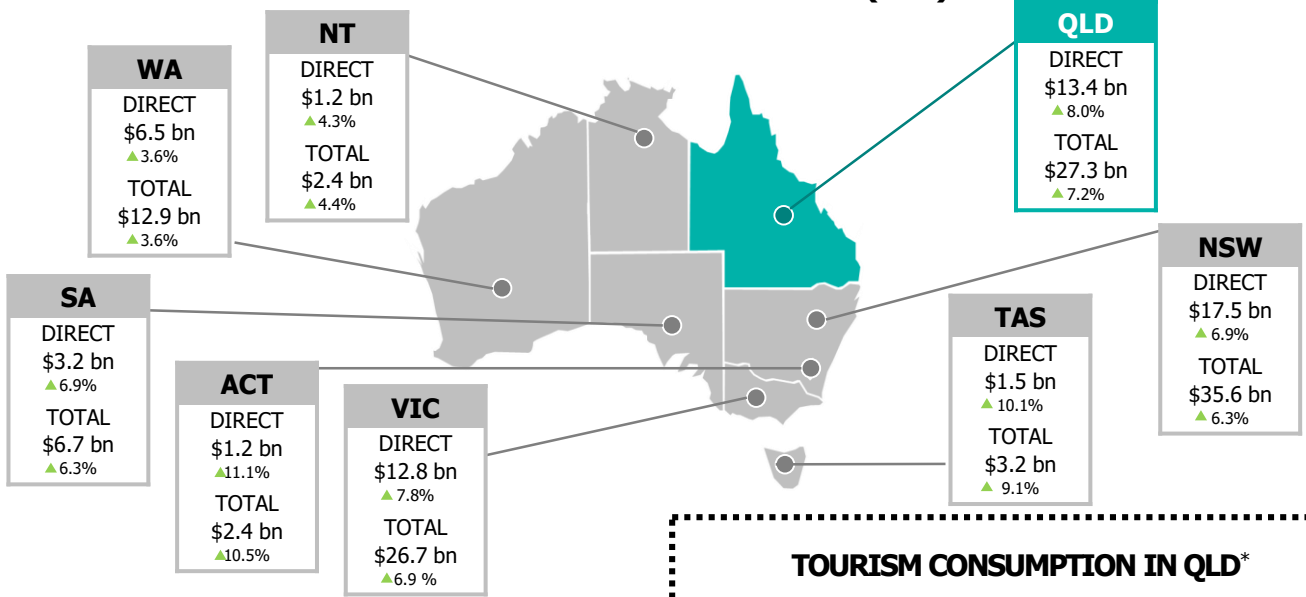


STATE TOURISM SATELLITE ACCOUNTS 2017-18, KEY FACTS



TOURISM GROSS STATE PRODUCT (GSP)



TOURISM EMPLOYMENT IN QLD

Total tourism employment in Queensland grew at a faster rate than overall state employment (6.2% vs. 4.2% overall)

236k
▲6.2% YoY

TOTAL EMPLOYMENT

DIRECT EMPLOYMENT

151k
▲5.6% YoY

Industry share of total QLD employment

Tourism (direct)

6.1%

Queensland's tourism industry employs more people than the agriculture, forestry and fishing and mining industries combined

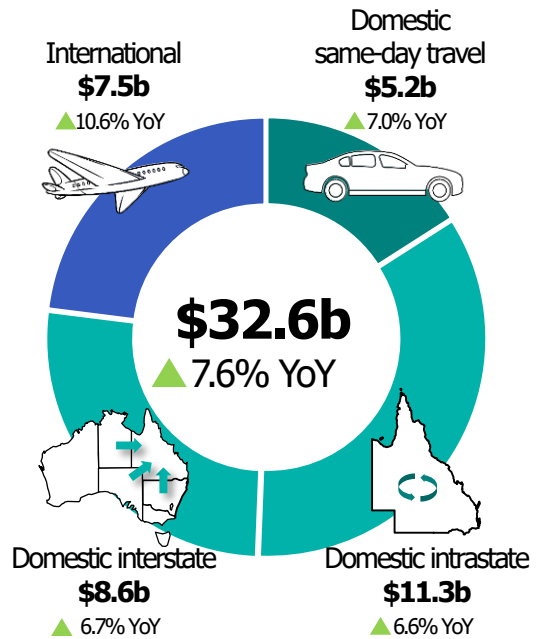
Agriculture, forestry and fishing

2.6%

Mining

2.5%

TOURISM CONSUMPTION IN QLD*



* Tourism consumption measures the total value of tourism goods/services consumed by residents/international visitors in Australia

DIRECT TOURISM EMPLOYMENT BY INDUSTRY



* Refers to cafes, restaurants & take-away food services

TOURISM GROSS VALUE ADDED*

* Gross value added is equal to GSP minus net taxes

	DIRECT		TOTAL	
QLD	\$12.3 bn	▲8.1%	\$24.4 bn	▲7.5%
NSW	\$16.1 bn	▲6.9%	\$31.9 bn	▲6.6%
VIC	\$11.8 bn	▲7.8%	\$23.8 bn	▲7.4%
WA	\$6.0 bn	▲3.6%	\$11.6 bn	▲3.8%
SA	\$3.0 bn	▲6.9%	\$6.0 bn	▲6.6%
TAS	\$1.4 bn	▲10.2%	\$2.9 bn	▲9.3%
NT	\$1.0 bn	▲4.2%	\$2.2 bn	▲4.5%
ACT	\$1.1 bn	▲11.2%	\$2.1 bn	▲10.7%