

REGIONAL TOURISM SATELLITE ACCOUNTS 2017-18

SOUTHERN GREAT BARRIER REEF REGION KEY FACTS



In 2017-18, the tourism industry contributed an estimated **\$1.3 billion** to the Southern Great Barrier Reef (SGBR) regional economy (5.2% of the SGBR region's gross regional product) and supported around **13,300 jobs** (8.9% of employment in the SGBR region).

TOURISM GROSS REGIONAL PRODUCT (GRP)

*GSP indicates Gross State Product



SGBR	Regional QLD ²	Total QLD (GSP*)
DIRECT \$705.9M ▲14.4% 2.8% of SGBR GRP	DIRECT \$6.0 bn ▲9.3% 4.4% of Reg. QLD GRP	DIRECT \$13.4 bn ▲8.0% 3.8% of QLD GSP
TOTAL \$1.3 bn ▲14.1% 5.2% of SGBR GRP	TOTAL \$10.8 bn ▲9.0% 8.0% of Reg. QLD GRP	TOTAL¹ \$27.3 bn ▲7.2% 7.8% of QLD GSP

GRP/GSP Per Capita



TOURISM EMPLOYMENT IN THE SGBR REGION

Supporting 13,300 jobs
8.9% of SGBR employment

▲12.8%
YoY

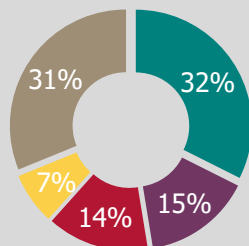


9,700 direct tourism jobs
6.5% of SGBR employment

▲12.2%
YoY

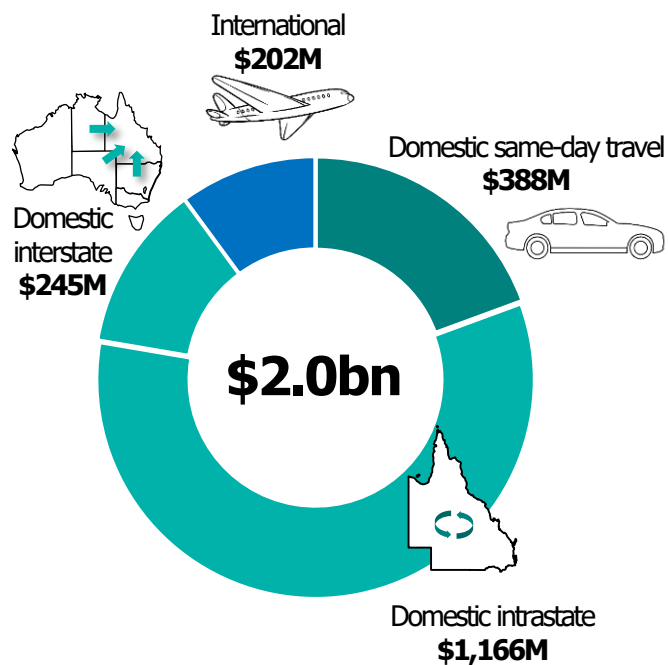
DIRECT TOURISM EMPLOYMENT BY INDUSTRY

- Food services**
- Retail trade
- Accommodation
- Travel agency and tour operator
- All other industries



** Refers to cafes, restaurants & take-away food services

TOURISM CONSUMPTION IN THE SGBR REGION[#]



[#]Tourism consumption measures the total value of tourism goods/services consumed by residents/international visitors in Australia

SOURCE: TOURISM RESEARCH AUSTRALIA, REGIONAL TOURISM SATELLITE ACCOUNTS 2017/18

Notes: 1. Total impact on the Australian economy of tourism consumption in Queensland
2. Regional Queensland includes all tourism regions outside of Brisbane and the Gold Coast